

2023 annual report to the
Community

Unley Kindergarten

Unley Kindergarten number: 4691

Partnership: Greenhill South



Preschool director:

Melissa Quartuccio

Melissa Quartuccio

Date of endorsement:

21/02/2024



Context & Highlights

Statement

Information about Unley Kindergarten is available on the centres website, as well as the Australian Childrens Education and Care Quality Authority (ACECQA) website.

Unley Kindergarten is a stand-alone Kindergarten and belongs to the Greenhill South Partnership of schools and preschools. We work closely with Unley Primary School as our main feeder school. There continues to be a high demand of families in the local area and the wider community who wish to enrol their child in our kindergarten. We are currently operating at capacity which is 22 children per session. The programs operating at the preschool include; sessional Kindergarten for eligible children, Bilingual Support and Preschool Support for children with special rights on an as needs basis. Allied health and other support services are accessible through the Department for Education on an as needs basis.

2023 commenced with a continuation of the staff team. Jodie Grimm started maternity leave in term two and Melissa Quartuccio commenced as Acting Director in her absence. We also welcomed our first cohort of mid-year preschool children in term 3. These children and the term 1 intake children handled the transition remarkably well, they should all be proud.

Long established structures and processes at the site were maintained and this supported staff to work collaboratively and cohesively in order to effectively operate the kindergarten. Throughout the year we prioritised time as a team during planned student free days to work with the NQF. Melissa (director) and Tanya (teacher) also revised the sites Risk Assessments and Policies and Procedures ensuring the documents were up to date and compliant. Staff jointly presented a Parent Information Session with the first mid-year intake cohort of families; we also hosted our 2024 cohort with a joint Orientation and Parent Information Session that was well attended.

We welcomed the addition of fans under the veranda and ducted heating and cooling in term 2 which allowed for more comfortable learning environments year-round.

Planned upgrades to the facilities with corporate funding secured in 2023 include upgrading the kindergarten roof and veranda skylights. We anticipate the completion of this in early/mid 2024.

Both kindergarten groups (Rosellas and Possums) connected at our family events which included The Twilight Picnic, The Annual Art Show, Sports Day 'The Kurna Games', and our End of Year Treasure Hunt held at the Adelaide Botanic Gardens. These events are always a highlight for children, families and staff alike. This year, with the inclusion of the mid-year intake, we hosted our first graduation ceremony at the kindergarten for the children leaving for school.

Incursions are highly valued by the staff team for the authentic learning that they bring. Incursions at kindergarten in 2023 included the Greenhill Living Gardening Program to facilitate a seasonal garden project, Bugs and Slugs, The South Australian Police, Trent Hill, Unley Library Librarian visits and our much appreciated volunteer Sandy who ran woodworking sessions with both groups of children.

Let us not forget all of the animals that visited from the Nature Education Centre including Lizards, Frogs, Rabbits, Insects and Turtles – just to name a few! – as well as Henny Penny Chicken Hatching program, and watching the Silk Worm lifecycle from worms, to cocoons, to moths, to egg laying.

Melissa Quartuccio – Acting Director 2023

Governing Council Chairperson Report

It has been my honour to represent the governing council a second time for the Unley Kindergarten, this time as Chairperson for 2023. Allow me to present a summary of the year's events from a parent and governing council's perspective.

The governing council has consisted of a handful of dedicated parents, the kindy director and an educator, meeting twice a term to discuss the functionality and objectives of the kindergarten. Each agenda consisting of building and equipment maintenance, financial updates, summary of curriculum from the previous and upcoming terms and the planning of upcoming events. This year after previous feedback, we opened the communication further prior to each meeting to allow any questions or topics to be presented at the meeting on their behalf, where parents couldn't attend in person.

2023 from all sides had been the year of change and adaption. Not only was it the first year to re-introduce the mid-year intake opportunity for young ones not quite ready early in the year, but our beloved kindy director was also due to take maternity leave from term 2. This meant a new interim director also started in term 2 and we welcomed Melissa Quartuccio to Unley Kindy in week 3.

Term 1 with a smaller group of children to allow for mid-year intake, enjoyed visits from hermit crabs, a turtle and Tabitha the yabby capturing the children's inquisitive minds to discover everything they could about these little creatures. Bok-Choy and Rosemary (our resident chickens) were well cared for over the Christmas break and were delighted to have so many happy faces around them every day again.

It was all about life cycles in term 2 as the obvious void was apparent with the deaths of Rosemary and Bok-Choy after being taken by a fox during the first holiday break. Children were encouraged to talk about their feelings and create art that reminded them of the chickens that was displayed throughout the facility. Discussion was also had in regards to why a fox needs to eat and feed their family. Then came the news of Jody's safe arrival of a baby girl as we were reminded that death and new life is part of our everyday existence. This discovery and awareness continued with the visit of more animals such as the marsh frogs, stick and leaf insects and chicks hatching from their eggs whilst in the incubator.

Also in term 2 was the coronation of King Charles which instigated a pretend play opportunity for the children to create event invitations and parade around the kindy as the newly coronated royal before enjoying high tea with their constituents.

It was agreed during a governing council meeting to include camp fire session in regular kindy days rather than nature kindy days due to attendance, popularity and opportunity for further fire safety understanding.

We acknowledged Reconciliation Week by learning songs and phrases in Kurna and identified symbols in Indigenous art. Then the children created their own self portraits and happily displayed them in the annual Unley Kindergarten Art Show for families and invited guests.

Term 3 welcomed 8 new children to the established groups, which was another opportunity for children to display their agility in evolving situations. After some coop reinforcement it was another welcome to the new resident chickens which both groups took a turn in naming Snolaf "Snowy" and Rose "Rosie".

From a maintenance perspective, ducted heating and cooling was installed in term 3 as budgeted and decision was passed to replenish the soft fall (bark) in the play area, but due to supply was postponed until later in the year.

Annual sports day was themed the "Kurna Games" with Kalta, Pirlta, Nantu and Wurtu being the 4 teams to display their colours on the day. The day was a big success and huge family involvement made it an efficient event.

More visits were had by various animals including Dazza the bearded dragon, insects & arachnids, Becky the bluetongue lizard, our 2-legged friends from local law enforcement plus 2 volunteers from families to engage the children in woodwork.

Term 4 highlights included the short stay of silkworms, Misty the bunny, Rebecca's visits for nature kindy gardening updates and of course the EOY celebration. Due to the mid year intake the end of year celebration was a scavenger hunt in the Adelaide botanic Gardens followed by an inclusive performance by the children. For the term 1 intake children, a separate graduation ceremony was held in week 8 on each group's respective days in house with the invitation for families to attend.

After fans were installed in the outdoor pergola and upon inspection, we were advised that the pergola roofing is no longer compliant with regulations, so plans had been tabled and discussed to replace in 2024 to comply with current regulation. An arborist had also been engaged to trim 2 trees on the property which was to be carried out early 2024.

Budget has been stretched with maintenance costs, lower intake for the first 6 months and staff movement, with hopes that the settlement of mid-year ratios will bring back a financial equilibrium in 2024.

We would like to thank all the amazing people that volunteered their time to visit, educate and support our children's development, notably but not limited to the SAPOL, Unley Library, The Nature Education Centre, Henny Penny Hatching, Bugs and Slugs, Growing with Gratitude Multi-Sports - Ash, Greenhill Living - Rebecca Mumford, Trent Hill, Sandy and Remington. A special thank you to the governing council for their time and contributions throughout the year assisting the education team to focus on what they do best. It really does take a village!

Warmest of welcomes the new members of the governing council and the children beginning their education journey at Unley Kindergarten in 2024 and a massive thank you to the education team for their enduring support and encouragement of our little ones.

Sincerely,
Natalie Collins – Chairperson 2023

Preschool Attendance

	Term 1	Term 2	Term 3	Term 4
2020 centre	91.6%		97%	95.3%
2021 centre		96.3%	92.3%	54.9%
2022 centre	82.9%	40.9%	82%	91.2%
2023 centre	30.3%	91%	95.3%	79.1%
2020 state	89.1%		84.6%	85.8%
2021 state		85.3%	87.1%	84.5%
2022 state	83.6%	77.6%	77.9%	77.8%
2023 state	85.4%	82.9%	83.4%	81.4%

Based on attendances recorded in the two-week reference period each term. Data for eligible enrolments as described in the department Enrolment policy. Attendance rates may differ to previous reporting with the transfer from calculations based on deemed attendance to attendance using booked hours divided by attended hours. Data Source: Department for Education Attendance Data, Semester 1 Report 2023. Blank cell indicates there were no students enrolled.

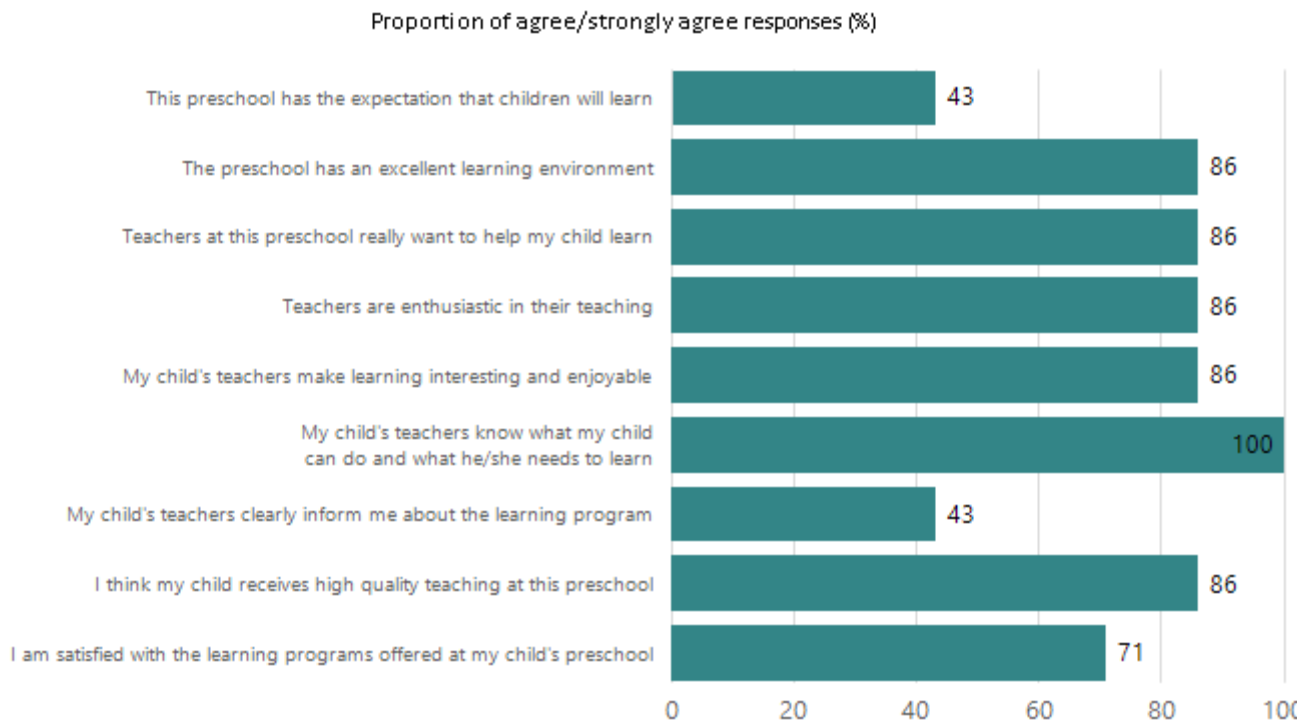
Note: Term 2 2020 data may not be available for all preschools.

Attendance Comment

In South Australia, preschool attendance is not compulsory, but it is strongly encouraged. Preschool gives children the best opportunity to develop skills, which prepare them for school. These benefits include establishing positive routines and habits, friendships and connections as well as developing communication, problem-solving and creative skills. All children are entitled to access a preschool program over 4 terms the year before they start school.

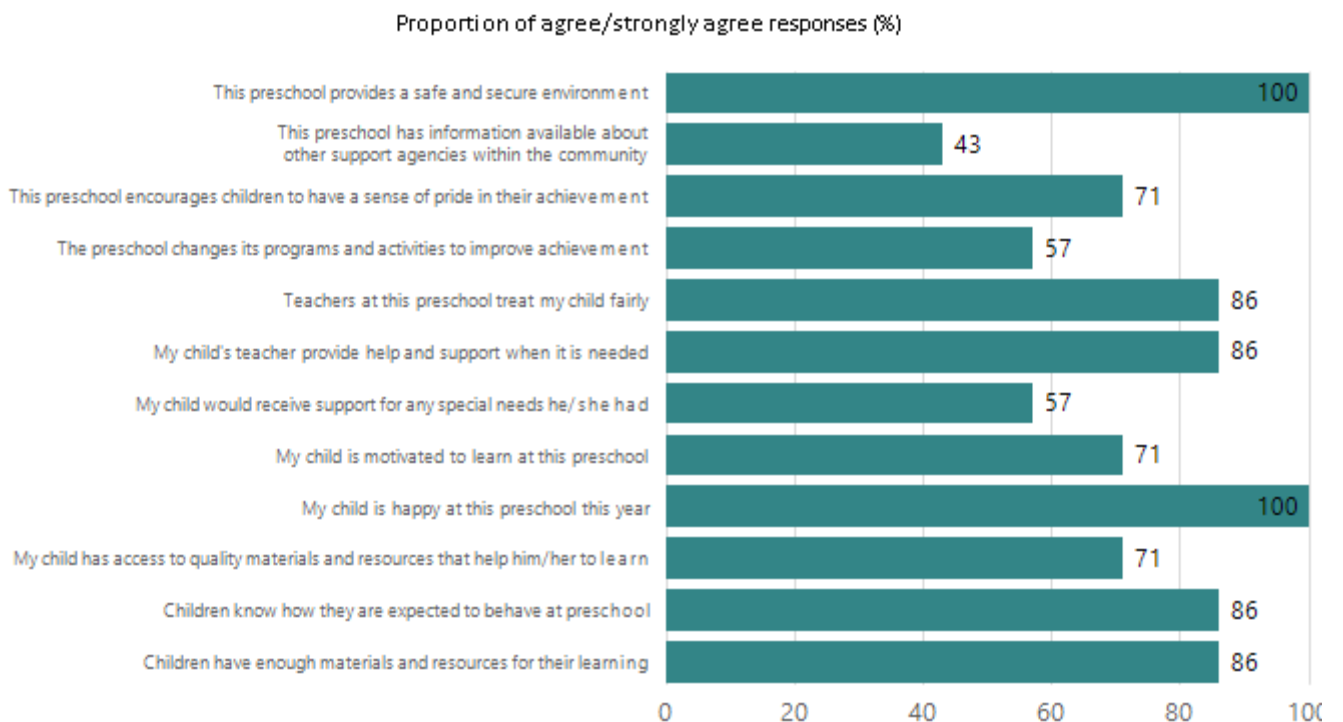
Preschool Family Opinion Survey

Quality of Teaching and Learning

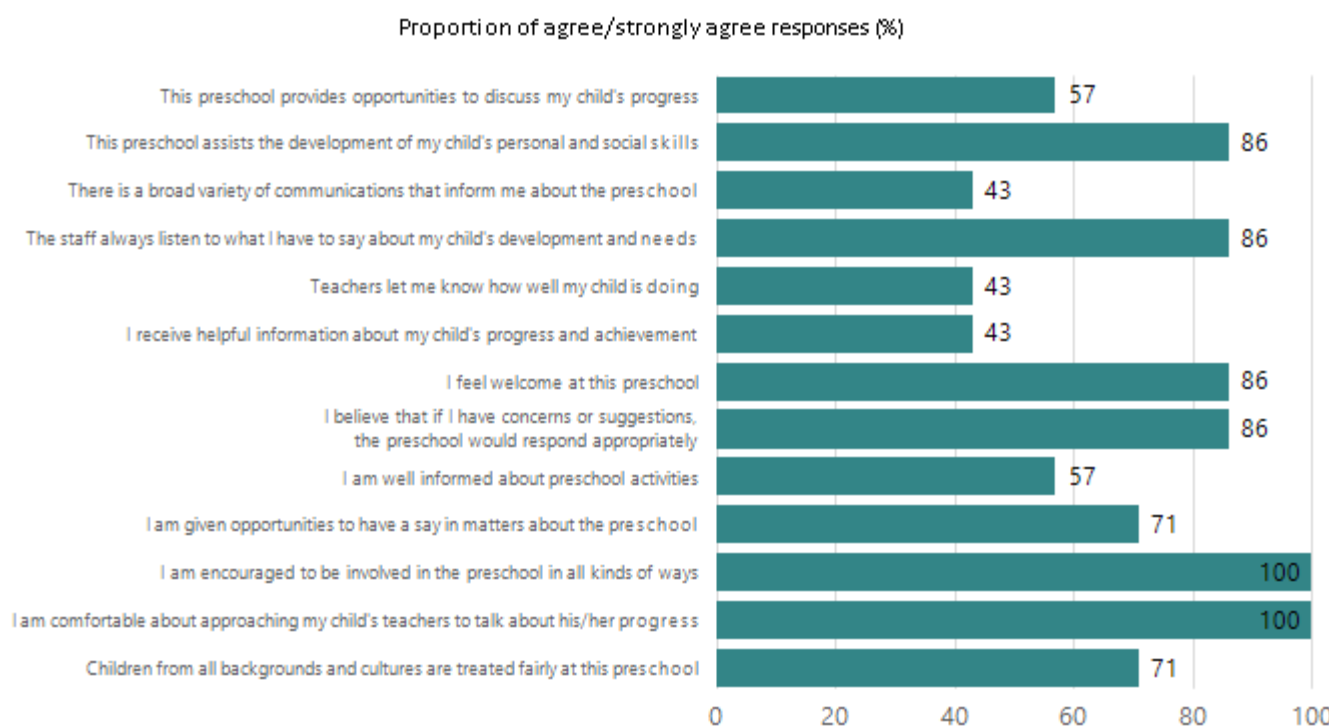


Data Source: 2023 Department for Education Preschool Family Opinions Survey, Term 3 2023.

Support of Learning

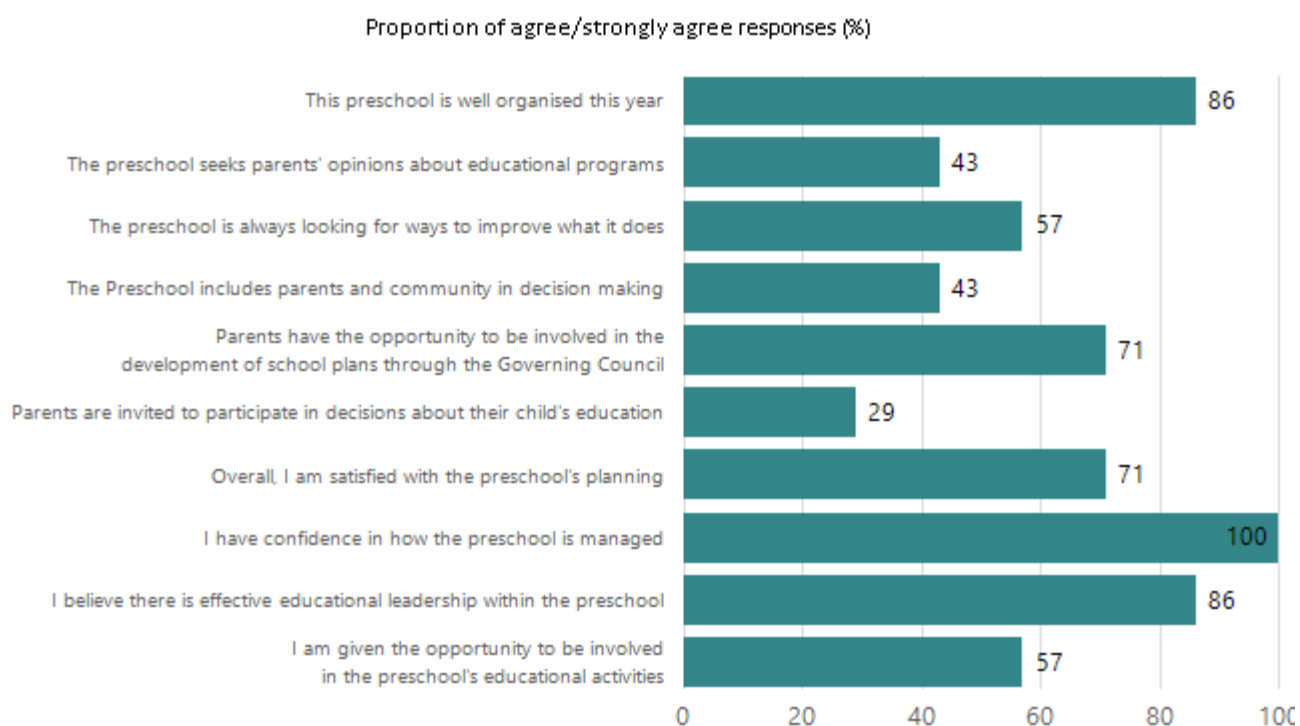


Relationships and Communication



Data Source: 2023 Department for Education Preschool Family Opinions Survey, Term 3 2023.

Leadership and Decision Making



Data Source: 2023 Department for Education Preschool Family Opinions Survey, Term 3 2023.

Destination Schools

Feeder Schools (Site number - Name)	2021	2022	2023
0328 - Parkside Primary School	6.8%		
0447 - Unley Primary School	72.7%	46.3%	64.9%
9999 - Unknown	20.5%	43.9%	29.7%

Note: The data is collected in term 3. It does not reflect actual schools enrolled in by existing preschool children. A blank cell indicates there was no data for students enrolled.

Data Source: Department for Education Destination Data Report, 2023.

Highest Qualifications held by the teaching workforce and workforce composition

All teachers at this school are qualified and registered with the SA Teachers Registration Board.

Qualification Level	Number of Qualifications
Bachelor's degrees or Diplomas	2
Postgraduate Qualifications	3

Data Source: Data extracted from Mandatory Workforce Information Collections as on the last pay date of June 2023. As self-reported by staff in the system.

Please note: Data includes staff who are Actively employed and on extended paid leave. Please note only the highest qualification of the Teaching staff is reported. Excludes any number of other certifications earned.

Workforce composition including indigenous staff

	Teaching Staff		Non-Teaching Staff	
	Indigenous	Non-Indigenous	Indigenous	Non-Indigenous
Full-Time Equivalents	0.0	3.5	0.0	0.6
Persons	0.0	5.0	0.0	2.0

Data Source: Data extracted from Mandatory Workforce Information Collection as on the last pay date of June 2023.

Please note: Data includes staff who are actively employed and on extended paid leave. "Indigenous category" is self-reported by staff in the system.

Financial Statement

Funding Source	Amount
Grants: State	\$392,092.82
Grants: Commonwealth	\$0
Parent Contributions	\$36,960.00
Fund Raising	\$0
Other	\$640.55

Data Source: School supplied data.