

2024 annual report to the Community

Unley Kindergarten

Unley Kindergarten number: 4691

Partnership: Greenhill South



Preschool director:

Jodie Grimm

Date of endorsement:

04/02/2025



Government
of South Australia
Department for Education

Context Statement

Location and Contact Information

Address: 47 Oxford Terrace, Unley SA 5061
Phone: 08 8271 6623
Fax: 08 8373 4562
Email: dl.4691.leaders@schools.sa.edu.au

Service Details

Service Approval No: SE-00011077
Service Type: Centre-Based Care
Preschool/Kindergarten - Stand Alone: Yes
Approved Places: 44
Provider Name: Department for Education
Provider Approval No: PR-00006069
Service Approval Granted Date: 1 January 2012

Hours of Operation

Monday to Thursday: 08:30 - 15:15
Friday: 08:30 - 13:30

Note: For information about scheduled closures, please contact the service directly.

Educational Philosophy

Unley Kindergarten is dedicated to providing a nurturing and educational environment that supports each child's physical, emotional, and social wellbeing. Our play-based curriculum values the child's voice, guiding learning through inquiry and collaboration. We are committed to forming meaningful partnerships with families and the community, reflecting our values of accessibility, flexibility, and connection with nature.

Community Engagement and Governance

Our kindergarten is actively engaged with the local community, participating in events and initiatives that celebrate learning. The Governing Council supports our operations, ensuring consistent relationships with educators and maintaining high-quality learning experiences.

Quality and Improvement

Unley Kindergarten has achieved an "Exceeding NQS" rating across all Quality Areas, reflecting our commitment to continuous improvement and high-quality education. Our educators engage in ongoing professional inquiry and critical reflection to enhance their practice and support each child's learning journey.

Governing Council Report

This year has been marked by significant achievements and ongoing commitment to providing a nurturing and educational environment for our children. Our Governing Council has worked diligently to ensure the smooth operation and continuous improvement of our kindergarten.

Financial Overview

The financial health of the kindergarten remains strong, with regular reports indicating favourable variations due to efficient management and early fee payments.

The 2025 interim budget was approved, noting a planned deficit due to the shade structure project.

Curriculum and Community Engagement

Our curriculum has been enriched with activities focusing on sustainability, cultural diversity, and community involvement.

Events like the Art Show and Health Hustle have been successful, fostering community spirit and engagement.

Governance and Policy Updates

The Governing Council has approved updated delegations and policies, including a review of the Chicken Rearing Policy to ensure animal welfare during emergencies.

Regular audits and safety reviews have been conducted, ensuring a safe environment for our children.

Director's Reports

Regular updates on curriculum and health and safety have been provided, with positive feedback from parents on initiatives like the Health Hustle.

Mid-year enrolments have been successful, with positive feedback on orientation processes.

Future Plans

The planned shade structure for 2025 will enhance our outdoor learning environment.

There will be continued focus on engaging families and the community in our programs and decision-making processes.

In conclusion, the dedication of our staff, families, and Governing Council has been instrumental in achieving our goals this year. We look forward to another year of growth and collaboration.

Thank you for your continued support and involvement in making Unley Kindergarten a thriving community.

Preschool Attendance

	Term 1	Term 2	Term 3	Term 4
2021 centre		96.3%	92.3%	54.9%
2022 centre	82.9%	40.9%	82%	91.2%
2023 centre	30.3%	91%	95.3%	79.1%
2024 centre	92.2%		84.7%	

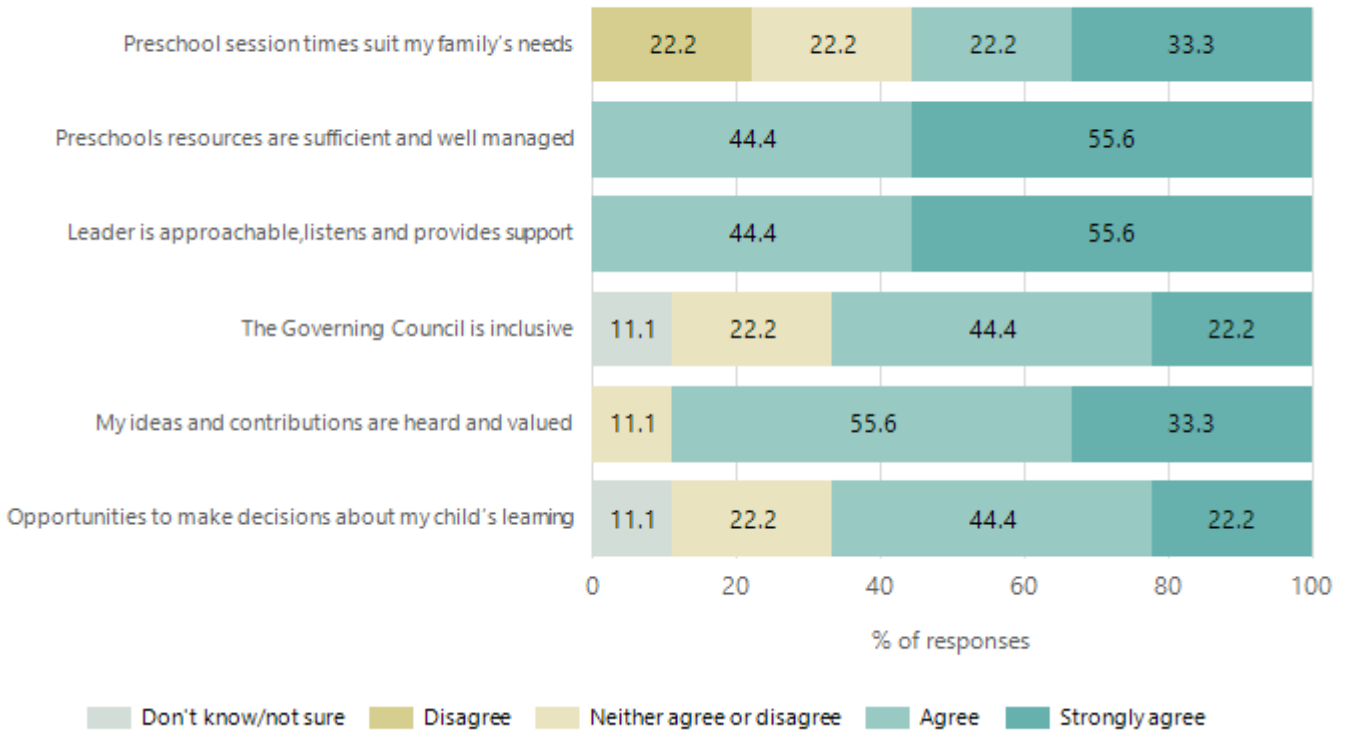
Based on attendances recorded in the two-week reference period each term. Data for eligible enrolments as described in the department's Enrolment policy. Attendance rates may differ to previous reporting with the transfer from calculations based on deemed attendance to actual attendance using booked hours divided by attended hours. Data Source: Department for Education Attendance Data, Semester 1 Report 2024. A blank cell indicates there were no students enrolled.

Attendance Comment

In South Australia, preschool attendance is not compulsory, but it is strongly encouraged. Preschool gives children the best opportunity to develop skills, which prepare them for school. These benefits include establishing positive routines and habits, friendships and connections as well as developing communication, problem-solving and creative skills. All children are entitled to access a preschool program over 4 terms the year before they start school.

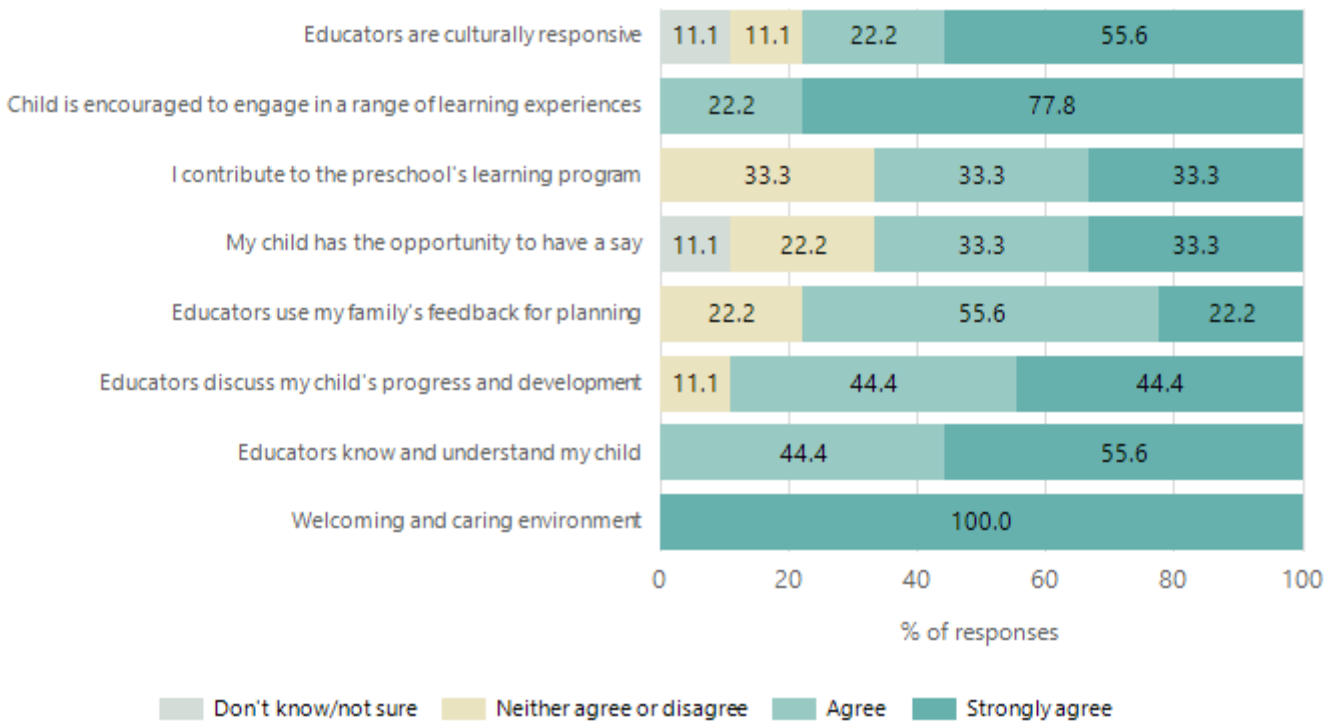
Preschool Family Opinion Survey

Governance, Leadership and Management



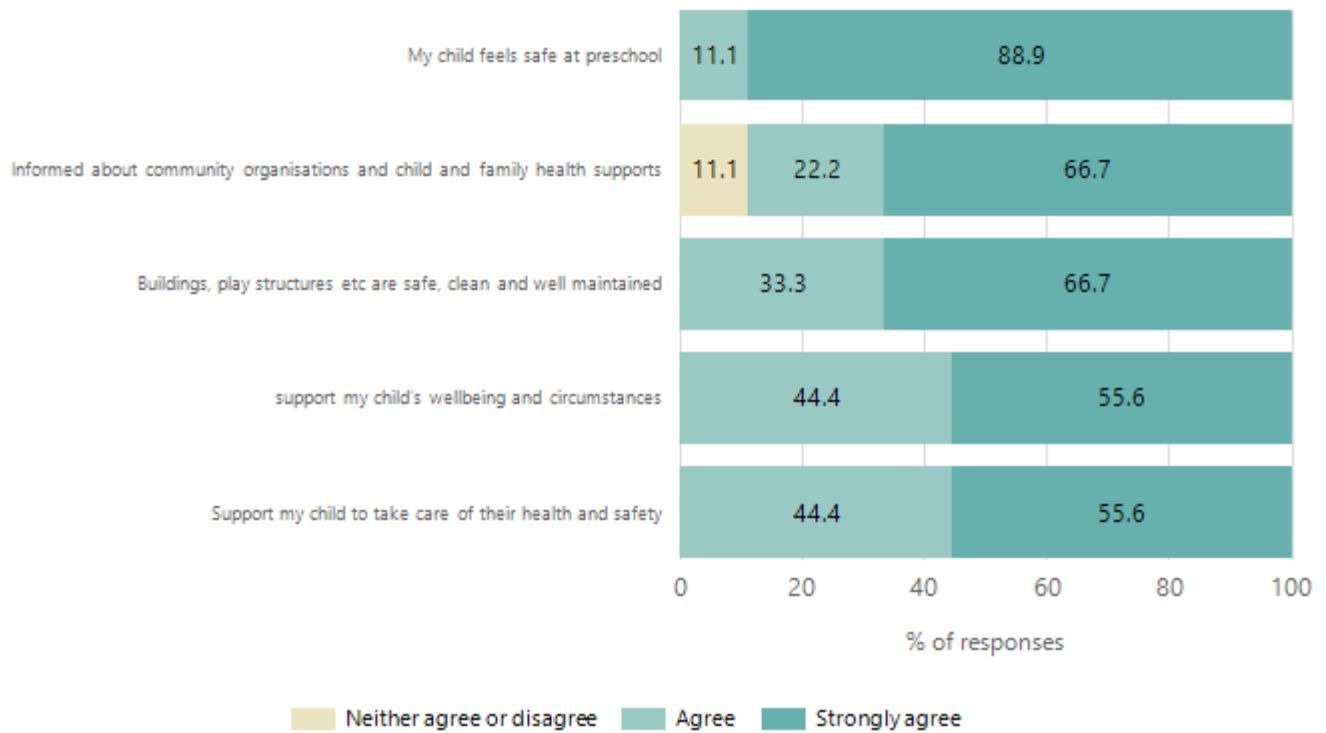
Data Source: 2024 Department for Education Preschool Family Opinions Survey, Term 3 2024.

Quality of Teaching and Learning



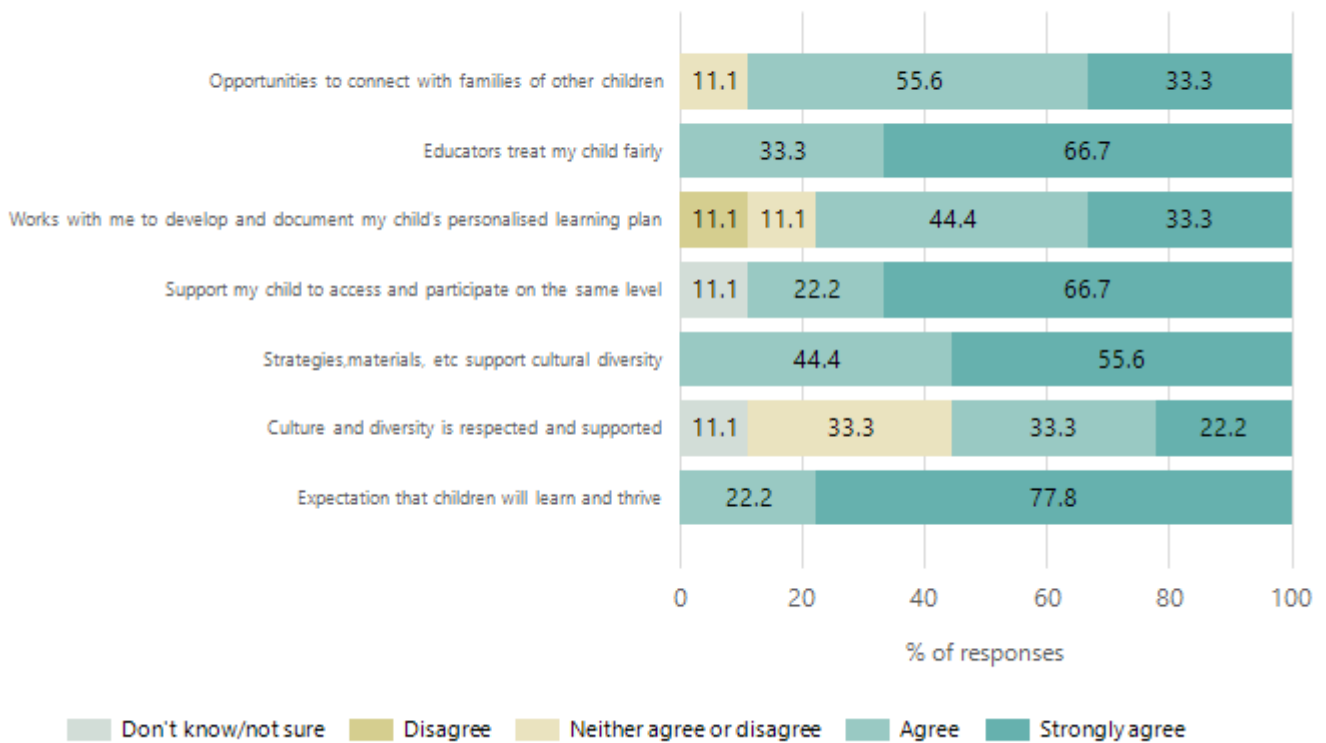
Data Source: 2024 Department for Education Preschool Family Opinions Survey, Term 3 2024.

Safety, Health and Wellbeing



Data Source: 2024 Department for Education Preschool Family Opinions Survey, Term 3 2024.

Support and Inclusion



Data Source: 2024 Department for Education Preschool Family Opinions Survey, Term 3 2024.

Destination Schools

Feeder Schools (Site number - Name)	2022	2023	2024
0447 - Unley Primary School	46.3%	64.9%	52.0%
9999 - Unknown	43.9%	29.7%	42.0%

Note: The data is collected in term 3. It does not reflect actual schools enrolled in by existing preschool children. A blank cell indicates there was no data for students enrolled.

Data Source: Department for Education Destination Data Report, 2024.

Highest Qualifications held by the teaching workforce and workforce composition

All teachers at this school are qualified and registered with the SA Teachers Registration Board.

Qualification Level	Number of Qualifications
Bachelor's degrees or Diplomas	3
Postgraduate Qualifications	1

Data Source: Data extracted from Mandatory Workforce Information Collections as on the last pay date of June 2024. As self-reported by staff in the system.

Please note: Data includes staff who are Actively employed and on extended paid leave. Please note only the highest qualification of the Teaching staff is reported. Excludes any number of other certifications earned.

Workforce composition including indigenous staff

	Teaching Staff		Non-Teaching Staff	
	Indigenous	Non-Indigenous	Indigenous	Non-Indigenous
Full-Time Equivalents	0.0	2.8	0.0	0.5
Persons	0.0	4.0	0.0	2.0

Data Source: Data extracted from Mandatory Workforce Information Collection as on the last pay date of June 2024.

Please note: Data includes staff who are actively employed and on extended paid leave. "Indigenous category" is self-reported by staff in the system.

Financial Statement

Funding Source	Amount
Grants: State	\$458,739.31
Grants: Commonwealth	NA
Parent Contributions	\$43,680.00
Fund Raising	NA
Other	\$1,655.64

Data Source: School supplied data.